

Aka-Brief #18 Surface Hardened Steel



Times are stated for a 300 mm preparation system and Forces for an individual 40 mm dia. sample.

On a 250 mm system the times should be increased by 30%, on a 200 mm system by 100%.

With larger samples the force should be increased, with smaller samples decreased.

Time and Force may vary depending on the equipment.

* The last preparation step is optional.

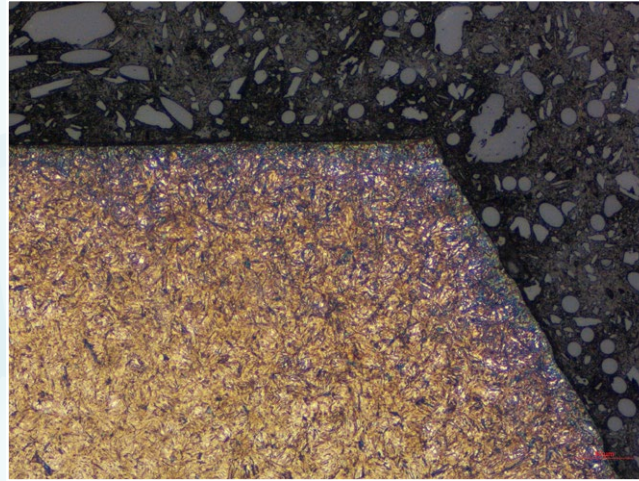


Aka-Brief #18 Surface Hardened Steel

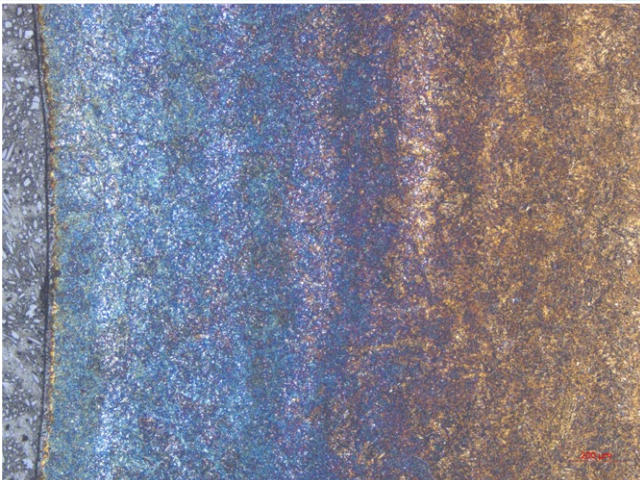
FINAL RESULT



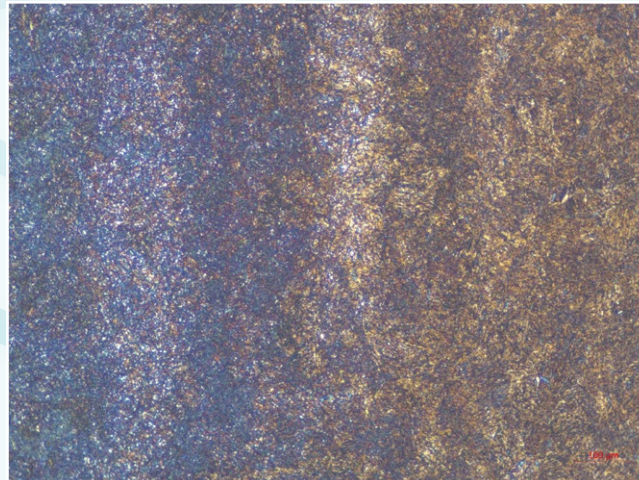
Etched with 3% Nital, BF, 50x



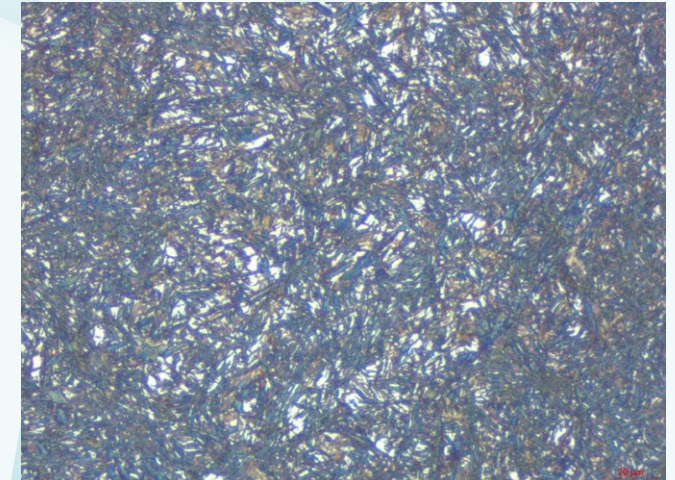
Etched with 3% Nital, BF, 200x



Etched with 3% Nital, BF, 50x



Etched with 3% Nital, BF, 100x



Etched with 3% Nital, BF, 500x