

# Labthink®

## The Permeation Guide



**KVALITEST**  
— INDUSTRIAL —

# OTR

## 3-Cell OTR TESTERS


**C203H**

- Equipped with ppb level coulometric oxygen sensor of Labthink.
- Super long service life, three times longer than traditional coulometric oxygen sensor.
- High precision instrument with automatic Humidity and flow-rate control.
- New drawer type test cell, one key automatic in-and-out with sound and light reminder.
- 12" Touch-screen tablet, with Windows™ 10 OS.

Test Range	0.02~200 cm <sup>3</sup> /(m <sup>2</sup> ·day)
Resolution	0.01 cm <sup>3</sup> /(m <sup>2</sup> ·day)
Repeatability	0.02 or 1% cm <sup>3</sup> /(m <sup>2</sup> ·day)
Temperature (°C)	15 ~ 50 ±0.2
Humidity (RH)	0%, 10%~90% ±1%, 100%

### Standards

ASTM D3985, ASTM F1307, ASTM F1927,  
GB/T 19789, GB/T 31354, DIN 53380-3,  
JIS K7126-2-B, YBB 00082003-2015

[Product Video](#)
[Product Brochure](#)

**C230H**

- Patented integrated test block with advanced hydrodynamic and thermodynamic designs.
- High precision instrument with automatic humidity and flow-rate control.
- The internal temperature and humidity of the instrument are automatically adjusted with temperature and humidity sensors.
- Simplified operation by one button Mode.
- 12" Touch-Screen Tablet, with Windows™ 10 OS.

Test Range	0.01~200 cm <sup>3</sup> /(m <sup>2</sup> ·d)
Resolution	0.001 cm <sup>3</sup> /(m <sup>2</sup> ·day)
Repeatability	0.01 or 2% cm <sup>3</sup> /(m <sup>2</sup> ·day)
Temperature (°C)	10 ~ 55 ±0.2
Humidity (RH)	0%, 10%~90% ±1%, 100%

### Standards

ASTM D3985, ASTM F1307, ASTM F1927,  
GB/T 19789, GB/T 31354, DIN 53380-3,  
JIS K7126-2-B, YBB 00082003-2015

[Product Video](#)
[Product Brochure](#)



# OTR

## 1-Cell OTR TESTERS 6-Cell OTR TESTERS


**C201B**

- Equipped with Labthink self-developed coulometric sensor conforming to ASTM D3985.
- Coulometric sensor requires no calibration.
- supports temperature control to satisfy tests under different conditions (optional).
- Built-in high-quality stainless steel test cell with better sealing performance.

Test Range	0.1~200 cm <sup>3</sup> /(m <sup>2</sup> ·d)
Resolution	0.1 cm <sup>3</sup> /(m <sup>2</sup> ·day)
Repeatability	0.01 or 2% cm <sup>3</sup> /(m <sup>2</sup> ·day)
Temperature (°C)	15 ~ 50 ±0.2

### Standards

ASTM D3985, ASTM F1307, ASTM F1927,  
GB/T 19789, GB/T 31354, DIN 53380-3,  
JIS K7126-2-B, YBB 00082003-2015

[Product Video](#)
[Product Brochure](#)

**C206H**

- Equipped with ppb level coulometric oxygen Sensor of Labthink.
- Super long service life, three times longer than traditional coulometric oxygen sensor.
- High precision instrument with automatic Humidity and Flow-Rate control.
- Six independent test cells with 50cm<sup>2</sup> testing area.
- 12" Touch-screen tablet, with Windows™ 10 OS.

Test Range	0.02~200 cm <sup>3</sup> /(m <sup>2</sup> ·d)
Resolution	0.01 cm <sup>3</sup> /(m <sup>2</sup> ·day)
Repeatability	0.02 or 1% cm <sup>3</sup> /(m <sup>2</sup> ·day)
Temperature (°C)	15 ~ 50 ±0.2
Humidity (RH)	0%, 10%~90% ±1%, 100%

### Standards

ASTM D3985, ASTM F1307, ASTM F1927,  
GB/T 19789, GB/T 31354, DIN 53380-3,  
JIS K7126-2-B, YBB 00082003-2015

[Product Video](#)
[Product Brochure](#)

# WVTR

## 3-Cell WVTR TESTERS


**C303H**

- Equipped with Labthink patented Infrared moisture sensor which obtains significantly lower test limit.
- Designed according to ASTM F1249.
- Long service life, non-consumable sensor.
- Functions of over limit alarm and automatic protection.
- New drawer type test cell, one key automatic in-and-out with sound and light reminder.
- 12" Touch-screen tablet, with Windows-10 OS.

Test Range	0.02~40g/(m <sup>2</sup> ·d)
Resolution	0.0001 g/(m <sup>2</sup> ·day)
Repeatability	0.02 or 2% g/(m <sup>2</sup> ·day)
Temperature (°C)	15 ~ 50 ±0.5
Humidity (RH)	5%~90% ±2%

### Standards

ASTM F1249, ISO 15106-2, GB/T 26253, JIS K7129, YBB00092003-2015

[Product Video](#)
[Product Brochure](#)

**C390H**

- New type infrared sensor for water vapor analysis with higher sensitivity. Designed according to ASTM F1249.
- Patented integrated test block with advanced hydrodynamic and thermodynamic design.
- Fast automatic testing process.
- Long service life, non-consumable sensor.
- 12" Touch-screen tablet, with Windows™ 10 OS.

Test Range	0.005~40g/(m <sup>2</sup> ·d)
Resolution	0.0001 g/(m <sup>2</sup> ·day)
Repeatability	0.005 or 2% g/(m <sup>2</sup> ·day)
Temperature (°C)	15 ~ 50 ±0.5
Humidity (RH)	5%~90% ±1%, 100%

### Standards

ASTM F1249, ISO 15106-2, GB/T 26253, JIS K7129, YBB00092003-2015

[Product Video](#)
[Product Brochure](#)

# WVTR

## 1-Cell WVTR TESTERS 6-Cell WVTR TESTERS


**C301B**

- Equipped with Labthink patented infrared sensor, conforming to ASTM F1249, non-consumable type with ultra-long service life.
- Temperature control feature to test under different conditions.
- Built-in high-quality stainless steel test cell with better sealing performance.
- Adopts single-chip microcomputer control and can run independently (micro-printer option).

Test Range	0.1~40g/(m <sup>2</sup> ·d)
Resolution	0.1 g/(m <sup>2</sup> ·day)
Repeatability	0.1 or 2% g/(m <sup>2</sup> ·day)
Temperature (°C)	15 ~ 50 ±0.5
Humidity (RH)	4%~100% ±2%

### Standards

ASTM F1249, ISO 15106-2, GB/T 26253, JIS K7129, YBB00092003-2015

[Product Video](#)
[Product Brochure](#)

**C306H**

- Equipped with Labthink patented Infrared moisture sensor which obtains significantly lower test limit.
- Designed according to ASTM F1249.
- Long service life, non-consumable Sensor.
- Six independent test cells with 50cm<sup>2</sup> testing area.
- 12" Touch-screen tablet, with Windows™ 10 OS.

Test Range	0.02~40g/(m <sup>2</sup> ·d)
Resolution	0.0001 g/(m <sup>2</sup> ·day)
Repeatability	0.02 or 2% g/(m <sup>2</sup> ·day)
Temperature (°C)	15 ~ 50 ±0.5
Humidity (RH)	5%~90% ±2%

### Standards

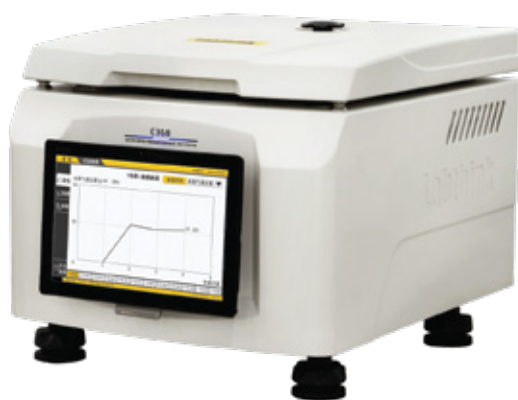
ASTM F1249, ISO 15106-2, GB/T 26253, JIS K7129, YBB00092003-2015

[Product Video](#)
[Product Brochure](#)



# WVTR

## HIGH EFFICIENCY GRAVIMETRIC TESTERS

**C360M**

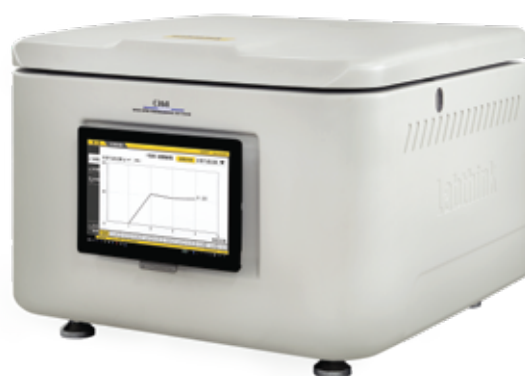
- 6-Cups high precision instrument with automatic humidity and Flow-Rate control.
- Simplified operation by one button Mode.
- Labor Saving operation.
- High-efficiency water vapor generator.
- 12" Touch-screen tablet, with Windows-10 OS.

**Test Range**

Water Method	0,01—10.000g/(m <sup>2</sup> ·day)
Desiccant Method	0,01 g—1.200g/(m <sup>2</sup> ·day)per pc.
Test Temperature (°C)	20 ~ 55 ±0.2
Test Humidity (RH)	10%~ 90% ±1%

**Standards**

ASTM E96, ASTM D1653, ISO 2528, TAPPI T464,  
DIN 53122-1, GB/T 1037, GB/T 16928,  
YBB 00092003-2015

[Product Video](#)[Product Brochure](#)**C360H**

- 12-Cups high precision instrument with automatic humidity and flow-rate control.
- Simplified Operation by one button Mode.
- Labor Saving operation.
- High-efficiency water vapor generator.
- 12" Touch-screen tablet, with Windows™ 10 OS.

**Test Range**

Water Method	0,01—10.000/n(1-6)g/(m <sup>2</sup> ·day)
Desiccant Method	0,01 g—1.200g/(m <sup>2</sup> ·day)per pc.
Test Temperature (°C)	20 ~ 55 ±0.2
Test Humidity (RH)	10%~ 90% ±1%

**Standards**

ASTM E96, ASTM D1653, ISO 2528, TAPPI T464,  
DIN 53122-1, GB/T 1037, GB/T 16928,  
YBB 00092003-2015

[Product Video](#)[Product Brochure](#)

# WVTR

## INVERTED CUPS TESTER ELECTROLYTIC TESTERS


**W3-031**

- 3-Cups high precision instrument with automatic humidity and flow-rate control.
- Inverted cups Testing Method, Water & Desiccant Testing method.
- Wide range of automatic temperature and humidity control to support various combinations of non-standard test conditions.

Test Range	0,1—10.000g/(m <sup>2</sup> ·day)
Test Accuracy	0,01 g/(m <sup>2</sup> ·day)
Test Temperature (°C)	15 ~ 55 ±0.1
Test Humidity (RH)	10%~ 98% ±1%

### Standards

ASTM E96, ASTM D1653, ISO 2528, TAPPI T464,  
DIN 53122-1, GB/T 1037, GB/T 16928,  
YBB 00092003-2015

[Product Video](#)
[Product Brochure](#)

**C330H**

- New electrolytic sensor for higher sensitivity.
- Test block with advanced hydrodynamic and thermodynamic design.
- Temperature and humidity sensor for independent monitoring of test cells.
- 12" Touch-screen pad powered by Windows™ 10 OS.

Test Range	0.00005~5g/(m <sup>2</sup> ·d)
Resolution	0.00001 g/(m <sup>2</sup> ·day)
Repeatability	0.00005 or 2% g/(m <sup>2</sup> ·day)
Temperature (°C)	10 ~ 55 ±0.2
Humidity (RH)	0%,10%~90% ±1%, 100%

### Standards

ISO 15106-3, ASTM F3299, GB/T 21529,  
YBB00092003-2015

[Product Video](#)
[Product Brochure](#)

# GTR

## 3-Cell WVTR TESTERS


**CI30H**

- High precision vacuum sensor for tests of ultra-high barrier materials with high accuracy and repeatability.
- High precision vacuum pump to generate vacuum up to 0.2Pa.
- Functions of over limit alarm and automatic protection.
- New drawer type test cell, one key automatic in-and-out with sound and light reminder.
- 12" Touch-Screen Tablet, with Windows-10 opsys.

Test Range	0.01~50,000 cm <sup>3</sup> /(m <sup>2</sup> ·d)
Vacuum Resolution	0.01 Pa
Repeatability	0.01 or 2% cm <sup>3</sup> /(m <sup>2</sup> ·d)
Temperature (°C)	15 ~ 50 ±0.05
Pressure	10.0KPa~210.0KPa

### Standards

ISO 2556, ISO 15105-1, GB/T 1038-2000,  
ASTM D1434, JIS K7126-1, YBB 00082003


**VAC-V2**

- High precision vacuum sensor for tests of ultra-high barrier materials with high accuracy and repeatability.
- Instrument is appropriate to test poisonous, inflammable, and explosive gases (customization required).
- For the determination of gas transmission rate (GTR), solubility coefficient, diffusion coefficient and permeability coefficient, in one, single operation.
- The instrument comes with two test modes: proportional mode and standard mode.

Test Range	0.05~50,000 cm <sup>3</sup> /(m <sup>2</sup> ·d)
Vacuum Resolution	0.1Pa
Repeatability	0.01 or 2% cm <sup>3</sup> /(m <sup>2</sup> ·d)
Temperature (°C)	5 ~ 95 ±0.1
RH	0%, 2% ~ 98.5%, 100%

### Standards

ISO 2556, ISO 15105-1, GB/T 1038-2000,  
ASTM D1434, JIS K7126-1, YBB 00082003

[Product Video](#)
[Product Brochure](#)
[Product Video](#)
[Product Brochure](#)



# GTR

## 1-Cell WVTR TESTERS 6-Cell WVTR TESTERS


**C101B**

- High precision vacuum sensor for tests of ultra-high barrier materials with high accuracy and repeatability.
- Instrument is appropriate to test poisonous, inflammable, and explosive gases (customization required).
- For the determination of gas transmission rate (GTR), solubility coefficient, diffusion coefficient and permeability coefficient, in one, single operation.
- The instrument comes with two test modes: proportional mode and standard mode.

Test Range	0.1~5,000 cm <sup>3</sup> /(m <sup>2</sup> ·d)
Vacuum Resolution	1.0Pa
Repeatability	0.01 or 2% cm <sup>3</sup> /(m <sup>2</sup> ·d)
Temperature (°C)	15 ~ 50 ±0.05

### Standards

ISO 2556, ISO 15105-1, GB/T 1038-2000,  
ASTM D1434, JIS K7126-1, YBB 00082003


**C106H**

- Six independent test cells with 50cm<sup>2</sup> testing area.
- High precision vacuum sensor for tests of ultra-high barrier materials with high accuracy and repeatability.
- High precision vacuum pump to generate vacuum up to 0.2Pa.
- 12" Touch-Screen Tablet, with Windows-10 opsys.
- Test of hazardous gases such as H<sub>2</sub>, CH<sub>4</sub> (customization required).

Test Range	0.01~50,000 cm <sup>3</sup> /(m <sup>2</sup> ·d)
Vacuum Resolution	0.01 Pa
Repeatability	0.01 or 2% cm <sup>3</sup> /(m <sup>2</sup> ·d)
Temperature (°C)	15 ~ 50 ±0.15
RH	0%, 5~90% ±2%

### Standards

ISO 2556, ISO 15105-1, GB/T 1038-2000,  
ASTM D1434, JIS K7126-1, YBB 00082003

[Product Video](#)
[Product Brochure](#)
[Product Video](#)
[Product Brochure](#)

# Labthink Technology

## Labthink Permeation Sensors



### Coulometric Sensor

- Equipped with Labthink latest technology ppb-level coulometric sensor featuring a wider test range.
- Designed conforming to ASTM D3985, intrinsic standard and no calibration is required.

### Infrared sensor

- Equipped with Labthink patented infrared sensor, featuring a wider test range.
- Designed conforming to ASTM F1249.
- Ultra-long service life, non-consumable type.
- Embedded with over-range warning and automatic protection function.

### Vacuum Sensor

- High-precision vacuum sensor can accurately test high barrier materials with  $0.01 \sim 0.09 \text{ cm}^3/\text{m}^2 \cdot 24\text{h} \cdot 0.1\text{MPa}$  test range.
- The vacuum pump can reach 0.2Pa extreme pressure with increased vacuum rate.
- The pneumatic control system has a low failure rate and an ultra-long service life, ensuring good overall system air tightness and high test accuracy.
- The vacuum pump is controlled automatically by the system without manual opening and closing for increased efficiency.

### Electrolytic Sensor

- Labthink's proprietary electrolytic sensor for water vapor analysis, has excellent precision, repeatability and service life.
- As a coulometric electrolytic sensor, its signal follows the Faraday principle and has a very high sensitivity.



# Labthink Technology

## Superior Design - High Efficiency

### Superior Design

- Brand new design of test-chamber and 360° air circulation constant temperature technology ensures better temperature stability.
- The test chamber is equipped with a high-precision humidity sensor to monitor and record humidity changes in real time.
- The control of velocity, temperature and relative humidity is automated to realize higher accuracy.



### High Efficiency

- Six, three or single independent test cells with a standard area of 50cm<sup>2</sup>, to serve any laboratory needs:
- Up to Six specimens can be tested simultaneously under the same testing condition, delivering independent test results.
- Automatic specimen clamping saves time and effort for C130H, C106H, C203H, C206H & C303H. The clamping force is consistent, resulting in better air tightness.



### Intelligent control

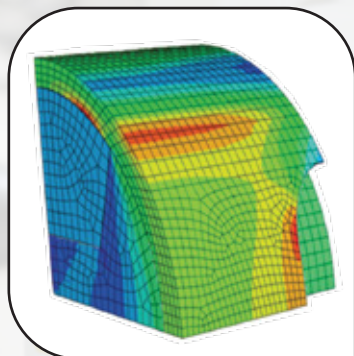
- 12" touch-screen tablet powered by Windows™ 10 operating system makes testing function simple and convenient.
- Automatic test mode requires only inputting temperature and humidity, one click startup, the test is fully automated.
- Intelligent test chamber hood automatically opens and closes with sound and light alert.

### Safe and reliable

- System security-Labthink's unique built-in high-end industrial computer prevents system failures caused by computer viruses, ensures operational reliability and data storage security.
- Operation safety-Equipped with various intelligent sensors which give sound and light alerts to ensure safe operation.

### Performance reliability

- The instruments adopts components of global renowned brands, to ensure stable and reliable performance.







---

## **Labthink Instruments Co, Ltd.** (China)

No.144 Wuyingshan Rd., Jinan 250031, China

Phone: 0531-58702626

FAX: 0531-85062108



---

## **Labthink International, Inc.** (America)

200 River's Edge Drive, Medford, MA, 02155, USA

Phone: (+1) 617-830-2190

FAX: (+1) 781-219-3638



---

## **Labthink GmbH** (Europe)

Werner-Heisenberg-Straße 2 63263 Neu-Isenburg Germany

Phone: +49 6102 5790 915

FAX: (+1) 781-219-3638

Labthink®

