



## L500-Street Light

The roadway luminaires are designed to address the full range of outdoor lighting challenges in municipal lighting, from walkways, bike paths, car parks, residential streets to public roadways.

Adopting high quality LED chips and high light transmittance PC lens with the proper optic system, L500 could ensure to only illuminate wherever the light is needed. The elegant and streamlined design with smooth surface eliminate the risk of accumulation of dust and dirt in a harsh environment.

Its superior performance and configurability provide uniform, energy-efficient light for commercial, industrial and municipal parking lots as well as roadway applications.



## Aesthetics & Practicality

Just right curve, not a inch more or less

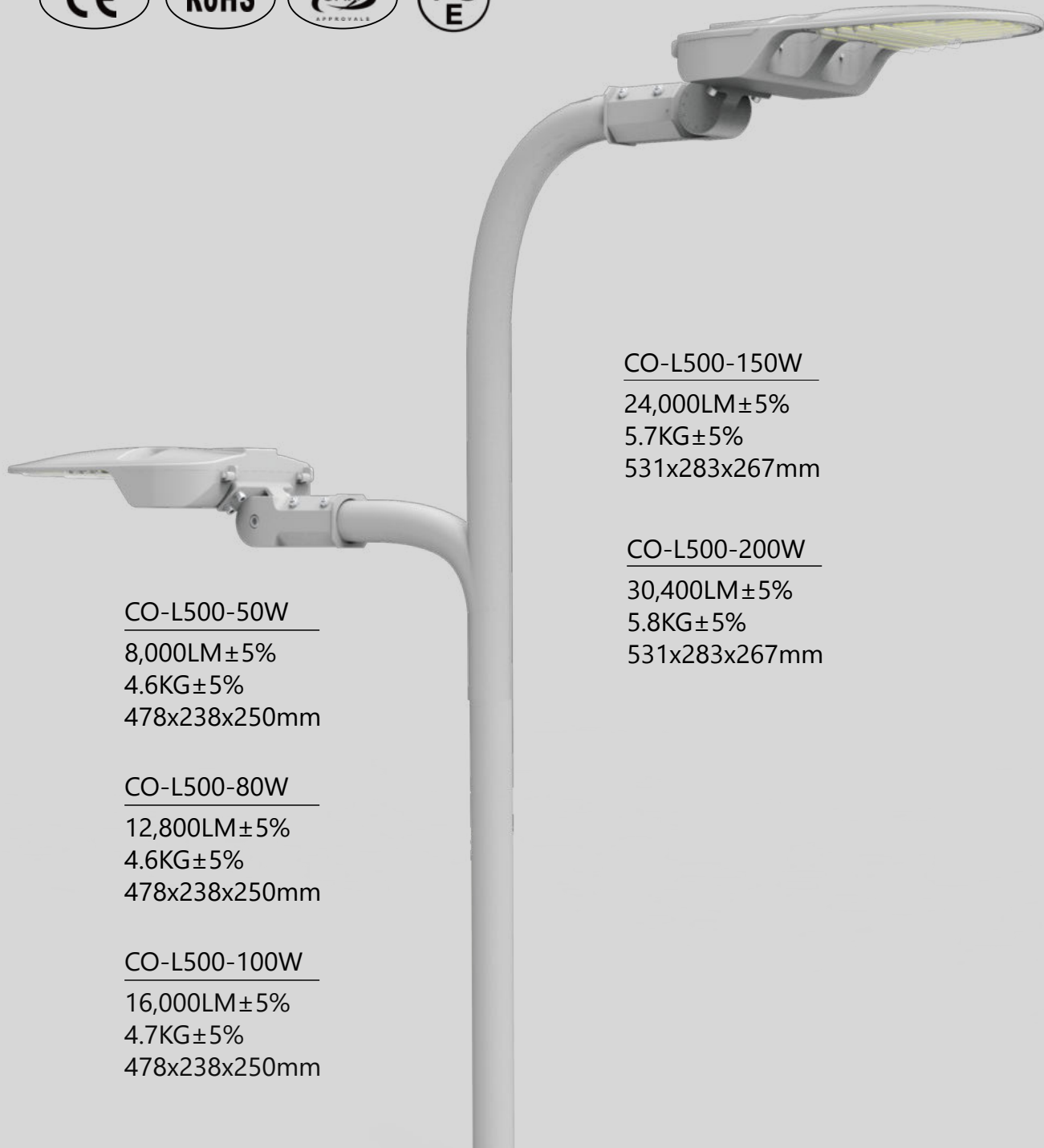
Homage to the supercar facade

7.8mm

10mm

## Integrated Surface

You won't see any exposed screw on the smooth lamp body, leave no place for dirt, leaf, snow, sand or even birds droppings. 7.8mm at its thinnest point, a neat modern artwork.



CO-L500-150W  
 24,000LM±5%  
 5.7KG±5%  
 531x283x267mm

CO-L500-200W  
 30,400LM±5%  
 5.8KG±5%  
 531x283x267mm

CO-L500-50W  
 8,000LM±5%  
 4.6KG±5%  
 478x238x250mm

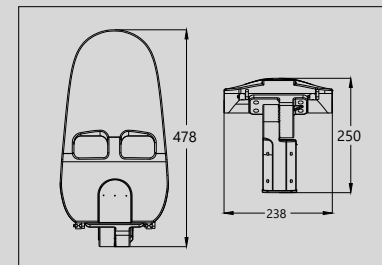
CO-L500-80W  
 12,800LM±5%  
 4.6KG±5%  
 478x238x250mm

CO-L500-100W  
 16,000LM±5%  
 4.7KG±5%  
 478x238x250mm

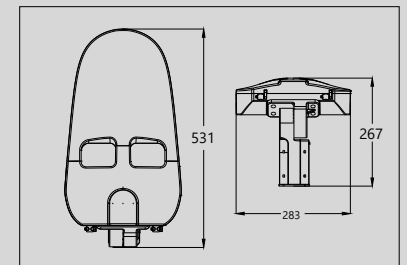
## Parameter

Wattage	50/80/100/150/200W
Lamp Efficiency	160LM/W±5%
CRI	Ra>70/80
CCT	2700~6500K
Rated Voltage	AC 100-240V 277V~, 50/60Hz
Power Factor	>0.95
IP Grade	IP66
IK Grade	IK10
Operating Temp	-40°C~60°C

## Size (mm)



50/80/100W



150/200W

## Installation



Pole



Arm



Wall

IP66

IK10

10KV

NEMA Socket Compatible



Dirt



Sand



Bird Droppings



Snow/Ice



Leaf



Rain

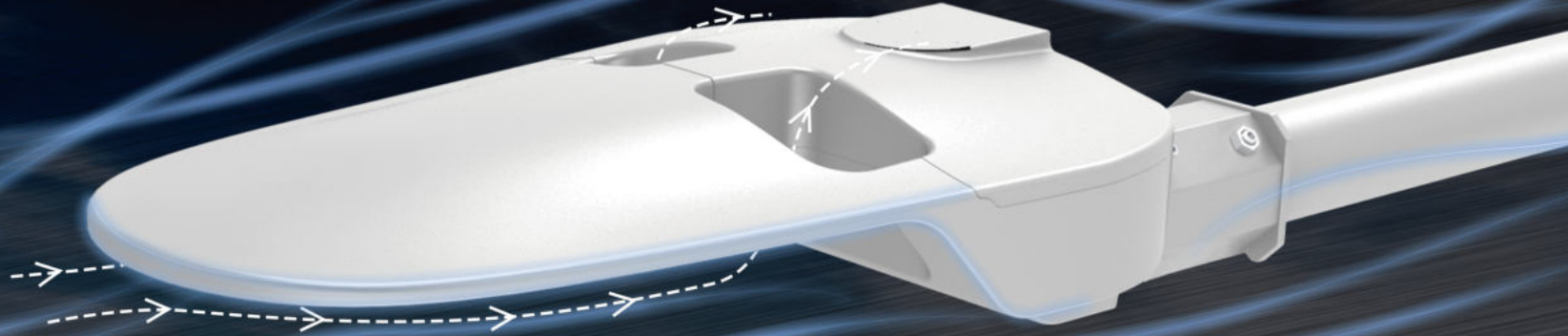


● **Breathing Valve**

Waterproof and breathable, block liquids and particles

# Low Wind Resistance Design

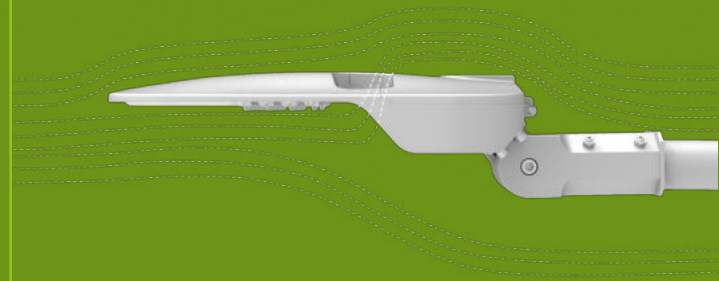
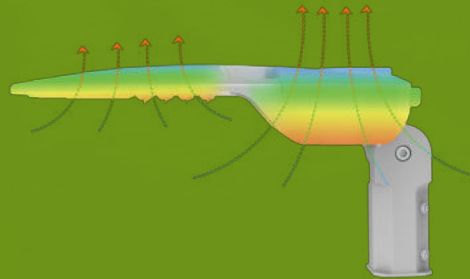
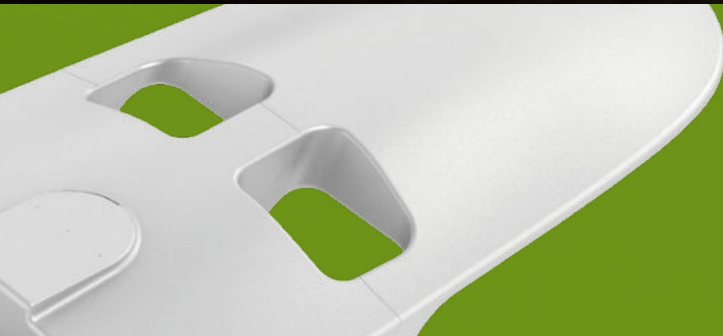
Reduce the load on the light pole, meanwhile reduce the vibration to maintain strength.

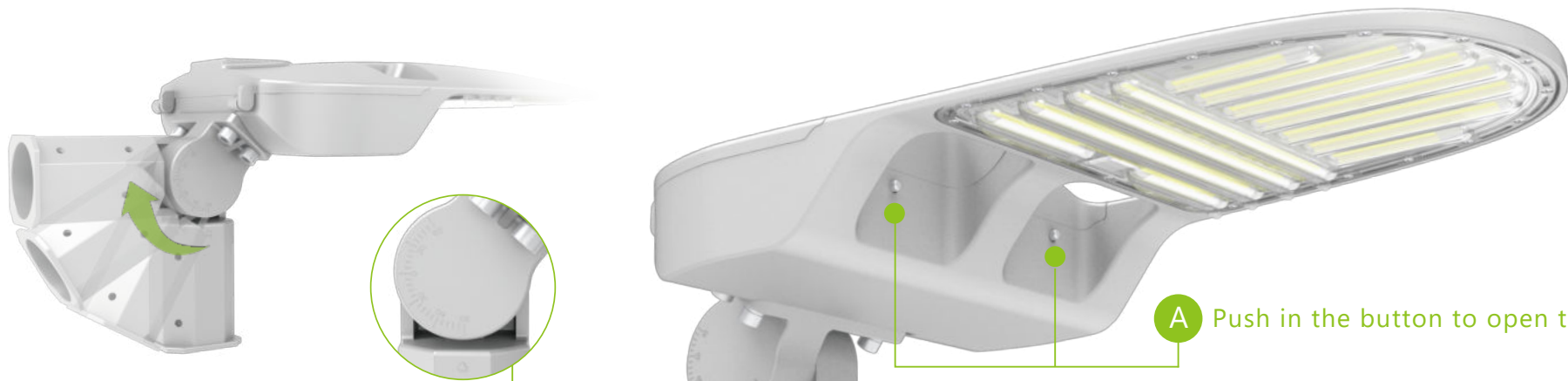


# Split Cooling System

Driver & LEDs attached with separate cooling system, reduce the overall heat.

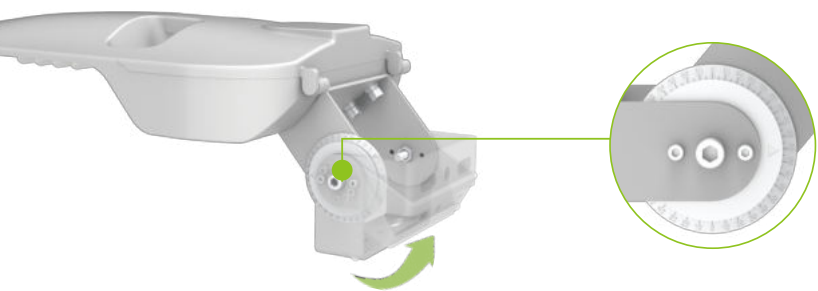
The central air tunnel allows more heat exchange.





**A** Push in the button to open the lid, no screws.

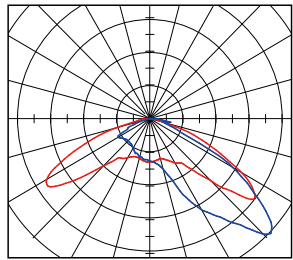
**C** 180° adjustable pole spigot/wall bracket with scale.



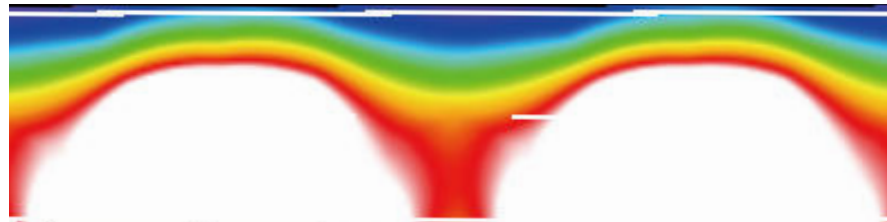
**B** It's always annoying to drop the screw/tools during maintenance, so we designed an upwards lid.



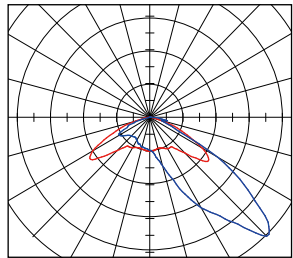
# Type Light Distribution Available



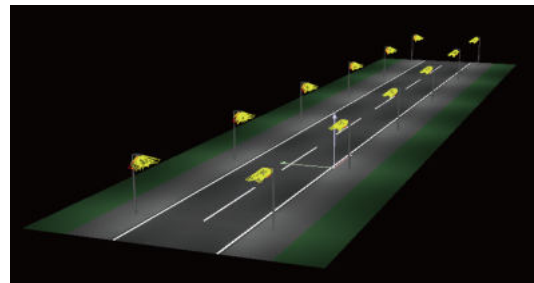
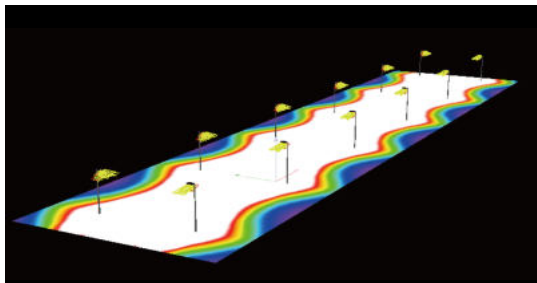
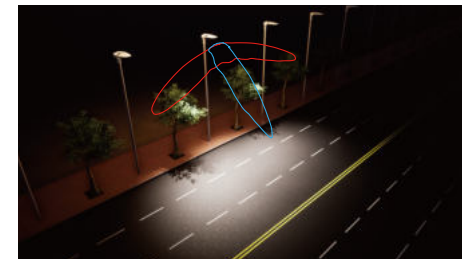
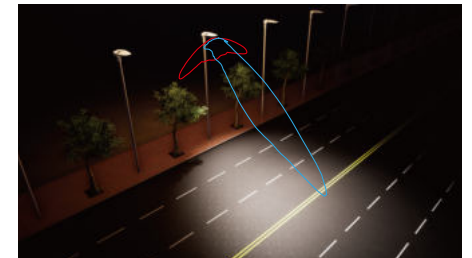
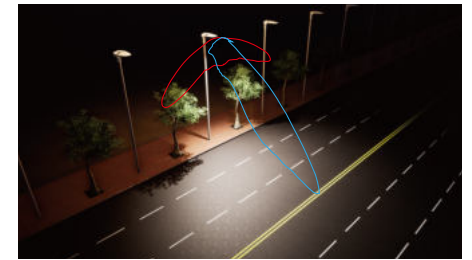
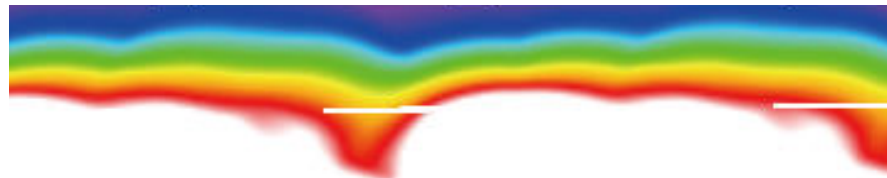
G7



G7-FT  
(Forward Throw)



G7-UW  
(Ultra Wide)



Multiple light distribution give different options for different projects, flexibly layout ensuring illumination while reducing glare.



# Application

Street



Community Street



Parking Lot



Public Area



Outdoor Billboard



Park



# Test

Salt Spray Test



UV Aging Test



High-Low Temperature Test



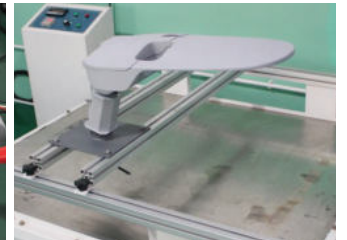
Waterproof Test



Withstand Voltage Test



Vibration Test



# Packing

Wattage	Size Of Box	Cross Weight
50w	550x310x235mm	6.1kg±5%
80w	550x310x235mm	6.1kg±5%
100w	550x310x235mm	6.2kg±5%
150w	600x360x240mm	7.5kg±5%
200w	600x360x240mm	7.6kg±5%

